



The Timken Company

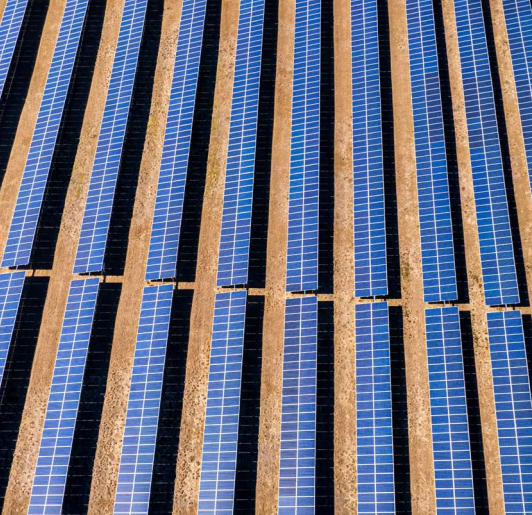
OPERATING DATA	2023	2022
Net Sales	\$ 4,769.0	\$ 4,496.7
Adjusted EBITDA	939.7	855.9
Adjusted EBITDA Margin	19.7%	19.0%
Adjusted Net Income	508.1	480.3
Free Cash Flow	357.4	285.4
SHAREHOLDER RETURNS		
Adjusted EPS	\$ 7.05	\$ 6.46
Dividends	1.30	1.23
OTHER KEY RATIOS		
Ratio of Net Debt to Adjusted EBITDA	2.1	1.9
Adjusted Return on Invested Capital	13.8%	14.5%

THE TIMKEN COMPANY

The Timken Company (NYSE: TKR; timken.com) designs a growing portfolio of engineered bearings and industrial motion products. With more than a century of knowledge and innovation, we continuously improve the reliability and efficiency of global machinery and equipment to move the world forward. Timken posted \$4.8 billion in sales in 2023 and employs more than 19,000 people globally, operating from 45 countries. Timken has been recognized among America's Most Responsible Companies and America's Greatest Workplaces for Diversity by *Newsweek*, the World's Most Ethical Companies® by *Ethisphere* and America's Most Innovative Companies by *Fortune*.

Figures are in millions of US dollars except per share data

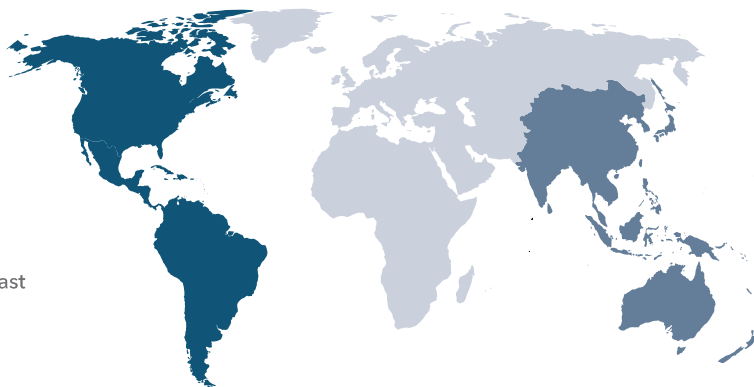
* See 2023 Annual Report at investors.timken.com for reconciliations to the most directly comparable generally accepted accounting principal (GAAP) measures.



2023 Sales by Geography

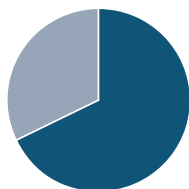
We solve the most complex challenges for global industries by operating where our customers need us.

- 53% Americas
- 25% Europe, Middle East and Africa
- 22% Asia Pacific



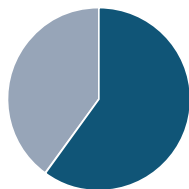
2023 Sales Mix

Business Segment Sales



- 68% Engineered Bearings
- 32% Industrial Motion

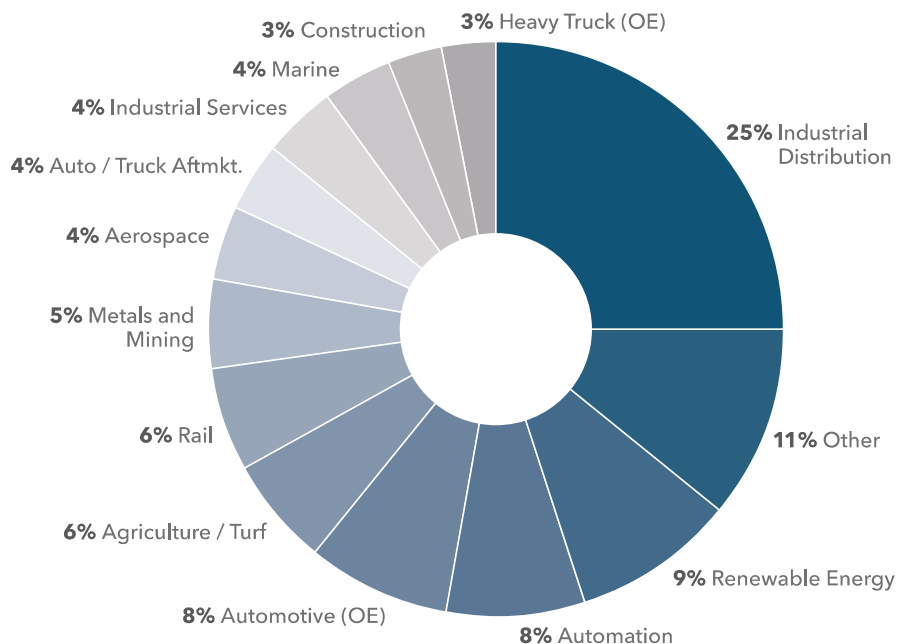
Channel Overview



- 60% Original Equipment Customers
- 40% Distributors / End-Users

Total 2023 End-Market / Sector Sales Mix

We keep the world in motion, serving the most attractive end-market mix in the industry, including renewable energy and automation.



Our Flagship Brands

Our growing portfolio of engineered bearings and industrial motion brands serve our customers' evolving needs.

TIMKEN

GROENEVELD
LUBRICATION SYSTEMS

BEKA
LUBRICATION SYSTEMS

Cone Drive

SPINEA

PHILADELPHIA GEAR

GGB

ROLLON

DIAMOND

NADELLA

DES-CASE

DRIVES

Lovejoy

PTTECH

TORSION CONTROL PRODUCTS

LAGERSMIT

Meghan Elmlad
Investor Relations

234-262-7112
investors@timken.com

TIMKEN